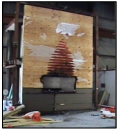
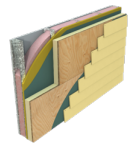




# AIA XCI 301HP

## Continuous Insulation: Code Compliance and the NFPA 285 in Commercial Wall Assemblies

PROVIDER K031 Hunter Panels LEARNING UNITS 1 HSW



### LEARNING OBJECTIVES

- 1** *What is the NFPA 285 Fire Test and why is it so important?*
  - Pass/Fail Fire Performance Test
  - Component Driven Test
  - Code Compliance and the NFPA 285
  
- 2** *What are common concerns encountered with NFPA 285 assembly design and installation?*
  - Improper Combination of Materials
  - NFPA 285 and other Types of CI, Compatibility, No Compatibility
  - Window and Door Details
  - Cladding Transitions
  
- 3** *What are the different types of CI Options that offer NFPA 285 compliance?*
  - EIFS, Board Insulation (Polyiso, EPS, XPS, Mineral Wool)
  - Insulated Cladding, Spray Insulation, Pre-insulated Concrete
  
- 4** *What are the advantages and challenges of CI Board Products in NFPA 285 assemblies?*
  - Maximize Space/R value
  - Airflow
  - Moisture
  - Attachment Methods
  - WRB Drainage Plane Placement
  - Component Costs

### REFERENCES AND RESOURCES

- Hunter Panels website  
[www.hunterpanels.com](http://www.hunterpanels.com)
- International Code Council  
[www.iccsafe.org](http://www.iccsafe.org)
- Polyisocyanurate Insulation Manufacturers Association website  
[www.pima.org](http://www.pima.org)